

Pi Cubes Digital Outputs Module provides easy way to add relay outputs to you modular Pi Cubes system.

It provides four dry contacts relay outputs , supporting maximum 2A resistive load on maximum 24VAC/DC.

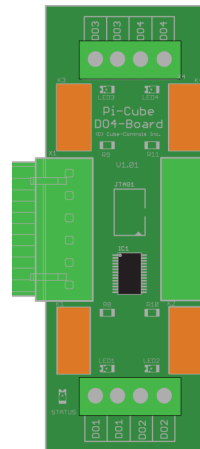
There is possible to connect up to six I/O modules in any possible combinations.

Features

Pi Cubes Digital Outputs Module is providing four digital relay outputs.

Main features are :

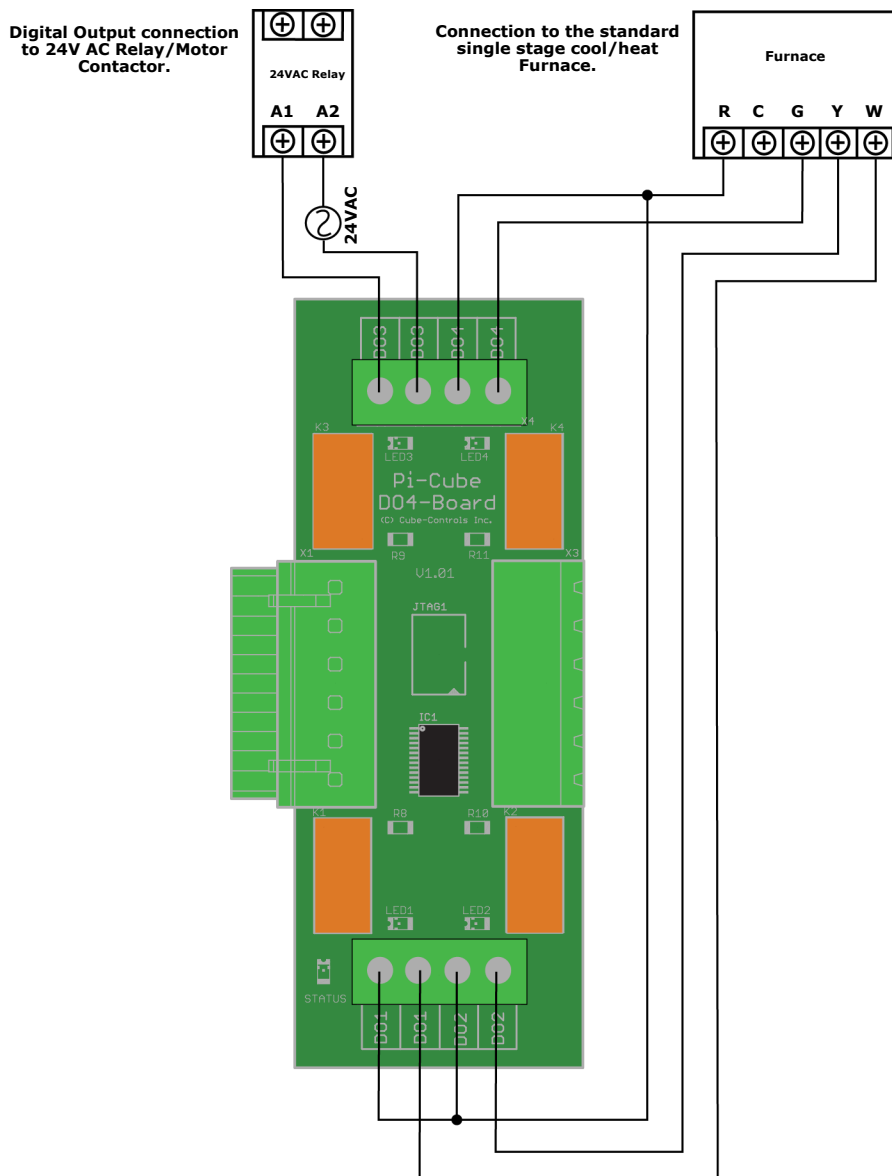
- Four digital relay dry contacts.
- Maximum resistive load 2A , with maximum voltage 24VAC/DC.
- Status LED for each digital relay output.
- Module Status LED, Flashing on power up and solid when module communication is established.



Technical Specifications

Power consumption:	20mA on 5VDC Power/60mA on 15VDC Power
MCU :	Cypress PSoC4 CY8C4125
Maximum Output Load :	Maximum 2A Resistive Load on 24VAC/DC per Output
Dimension:	W 38mm (1.5") x H 101 mm (4") x D 25mm (1")
Mounting:	Modified Tyco PVC PCB Track
Operating Parameters:	0°C(32°F) to 50°C (122°F) : 0-90% RH Non Condensing
CC Part Number:	CC-PI-CUBES-DO4

Connections and Wiring





Pi-Cubes Installation Terms & Conditions

Pi-Cubes is FCC 15/ICES-003 Class A product. In a domestic environment this product may cause radio interference, in which case the user may be required to take adequate measures:

- **Use all grounded shield cables.**
- **Install Pi-Cubes Main Board in to grounded control panel.**
- **Use adequate Ferrites on the cables if needed.**

Pi-Cubes will be subassemblies of your final product and you have full and exclusive responsibility to assure safety and compliance of your product based on the Pi-Cubes with all Federal, State and local regulatory requirements and other applicable regulatory requirements.

NO LIABILITY

TO THE MAXIMUM EXTENT PERMITTED UNDER APPLICABLE LAW, CUBE-CONTROLS INC., SHALL NOT BE LIABLE TO YOU, OR ANY THIRD PARTY, FOR ANY INDIRECT, EXEMPLARY, SPECIAL, CONSEQUENTIAL OR INCIDENTAL DAMAGES OF ANY KIND ARISING IN ANY WAY OUT OF USE OF THE PRODUCTS, INCLUDING, WITHOUT LIMITATION, LOSS OF PROFITS, REVENUES OR DATA, OR COSTS OF REPLACEMENT GOODS, EVEN IF CUBE-CONTROLS INC. HAS BEEN ADVISED OF THE POSSIBILITY OF SUCH DAMAGES AND NOTWITHSTANDING THE FAILURE OF ANY LIMITED REMEDY OF ITS ESSENTIAL PURPOSE.

Limited Product Warranty

We warrant Cube-Controls Products will be free from manufacturing defects for a period of thirty (30) days following the date of delivery to you. We will replace, repair or credit you for any confirmed defective product at our option. Please contact info@cube-controls.com with any issues.